

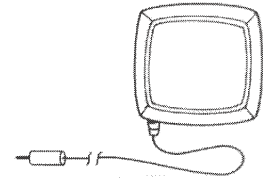
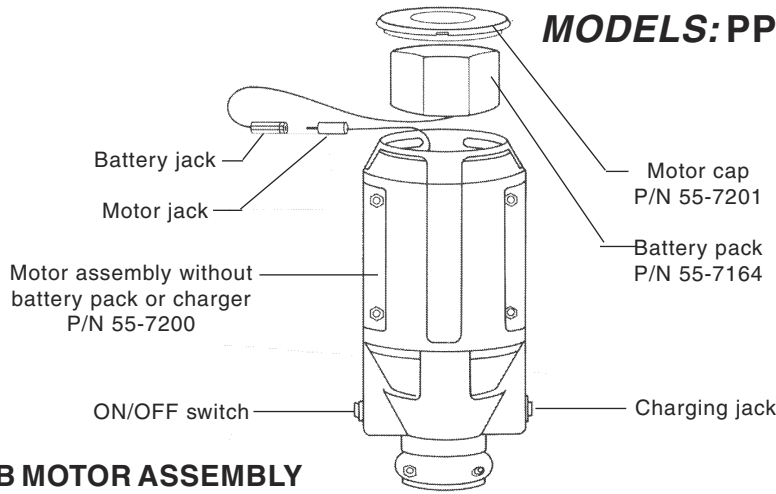


# RECHARGEABLE BATTERY or AIR OPERATED DRUM PUMPS

**MODELS: PPB-27, PPB-36 & PPB-48**

Refer to Bulletin P-622, Operating Instructions:

Pump - O-178  
Air Motor Model (D) - O-260



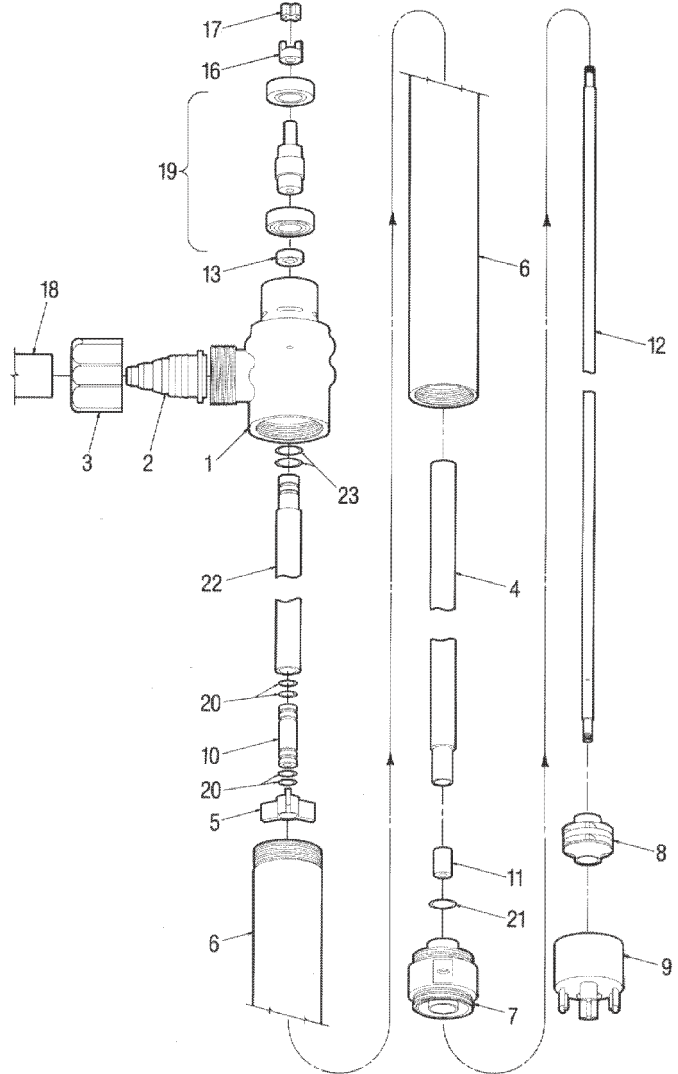
Battery charger  
110V P/N 55-7165  
220V/50Hz P/N 55-7165-50

**OPB MOTOR ASSEMBLY**  
**9.6VDC**  
**P/N 55-7157 &**  
**55-7157-50**

Refer to Master Price List F-800.

ITEM	DESCRIPTION	PUMP SIZE	PART NO.
*	Pump tube assembly	27" 36" 48"	55-7158 55-7159 55-7160
*	Air motor mounting bracket	All	55-7168
*	Air motor - Refer to Parts List P-3500	All	55-7203
*	Impeller repair kit (Includes items 7, 8, 9 & 21)	All	55-7199
1	Head	All	55-7170
2	Hose adapter	All	55-7171
3	Discharge nut	All	55-7172
4	Lower inner tube	27" 36" 48"	55-7173 55-7174 55-7175
5	Bearing support	All	55-7176
6	Intake tube	27" 36" 48"	55-7177 55-7178 55-7179
7	Impeller housing	All	55-7180
8	Impeller assembly	All	55-7181
9	Impeller housing cover	All	55-7182
10	Center bearing, TFE	All	55-7183
11	Bottom bearing, TFE	All	55-7184
12	Impeller shaft, Inconel®	27" 36" 48"	55-7185 55-7186 55-7187
13	Vapor seal	All	55-7188
16	Flex. coup. body (Air Motor), 3/8" (Electric Motor), 1/4" (Pump shaft), 5/16 dia.	All	55-7189 55-7190 55-7191
17	Coupling insert, rubber	All	55-7191A
18	Discharge hose only, 1" x 8 ft. long	All	55-0274
19	Bearing sleeve assembly	All	55-7192
20	"O"-ring, Viton® (4 required)	All	55-7193
21	"O"-ring, Viton®	All	55-7194
22	Upper inner tube	27" 36" 48"	55-7195 55-7196 55-7197
23	"O"-ring, Viton® (2 required)	All	55-7198

\* Not shown



Registered trademarks:  
Inconel - International Nickel Co.  
Viton - DuPont Company

Minimum order \$50.00

F.O.B. Northbrook, Illinois



**SERFILCO®**

2900 MacArthur Blvd. 847-509-2900  
Northbrook, IL 60062-2005 U.S.A. 800-323-5431  
e-mail: sales@serfilco.com FAX: 847-559-1995  
www.serfilco.com